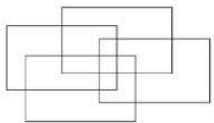


# OFFICE OF FINANCE USER SYMPOSIUM 2008

## Automating Cognos Finance

Doug Kirk

Cognos, an IBM Company



LSA Solutions  
*Value Beyond Software*



MERADOR

**CONCESSIO**  
*harmony through technology*



QueBIT®

**NITEO**  
PARTNERS

*Harness the Power of Change*

It's 3:00 am

The phone is ringing ...



... and you are told the GL did not update  
and you need to re-run everything

*Harness the Power of Change*

# Why Automate?

- Ensure all steps are followed
- Can be run on a schedule
- Lets the computer do the work
- Can be initiated from one command

“Where is the Close Key?”

*Harness the Power of Change*

# What can be automated?

- Almost any process in Cognos Finance can be automated
  - Data loads
  - Data movement
  - Metadata refresh
  - Favorite reports
  - Maintenance
  - System calculations

*Harness the Power of Change*

# Structure and Syntax

- Two different executable files:

**LEXWIN.EXE** – used to start a particular CF module in Windows

e.g., Open a report or form

**LEXWCMD.EXE** – used to run a CF process without intervention

e.g., Run a data load and calc process

# Where used

Module name	Description	Lexwin.exe	Lexwcmd.exe
REPORT	Reporting module	Y	N
INPUT	Data Input module	Y	Y
EXCEL	<i>Excel</i> Interface	Y	N
JE	Journal Entry module	Y	N
BATCH	Batch Reporting module	Y	Y
VREPORT	View Only Reporting module	Y	N
DEFINE	Define Items module	Y	Y
DELETE	Delete Items module	Y	N
COMMON	Common Accounts module	Y	N
CALCSUB	Calculate Submissions module	Y	Y
MAINTAIN	Maintain Submissions module	Y	Y
TRANSFER	Transfer Data module	Y	Y
FP	File Processing module	Y	Y
EXTRACT	Extract module	Y	Y
RAW	Display Raw Data module	Y	N
METADATA	Metadata Exchange module	Y	Y
SECURITY	Security module	Y	Y

Missing: Update Wizard, Calculation Tables

*Harness the Power of Change*

# LEXWIN Examples

Used to start a Cognos Finance module and bypass control panel

- Open a Report:



"C:\Program Files\Cognos\cer5\bin\lexwin.exe" /Module report /form C:\Program Files\Cognos\cer5\samples\Finance\YSRPTS\Income Statements\netincome\_USD\_yr\_3.lrf

- Open Calculate Submissions:



"C:\Program Files\Cognos\cer5\bin\lexwin.exe" /Module calcsb

*Harness the Power of Change*

# LEXWCMD

Can be used to run a process such as loading data or calculating submissions:

## Calculate Submissions Example

[CalcSub.bat](#)

### Set Flags

- "C:\Program Files\Cognos\cer5\bin\lexwcmd.exe" /SYSTEM GOS /MODULE CALCSUB /ACTION FLAGS /SUBMISSION 2006\_Act\_LC /OPTION SET /NI /DEBUG

### Calculate Submission

- "C:\Program Files\Cognos\cer5\bin\lexwcmd.exe" /system GOS /Module calcsub /submission 2006\_Act\_LC /NI /DEBUG

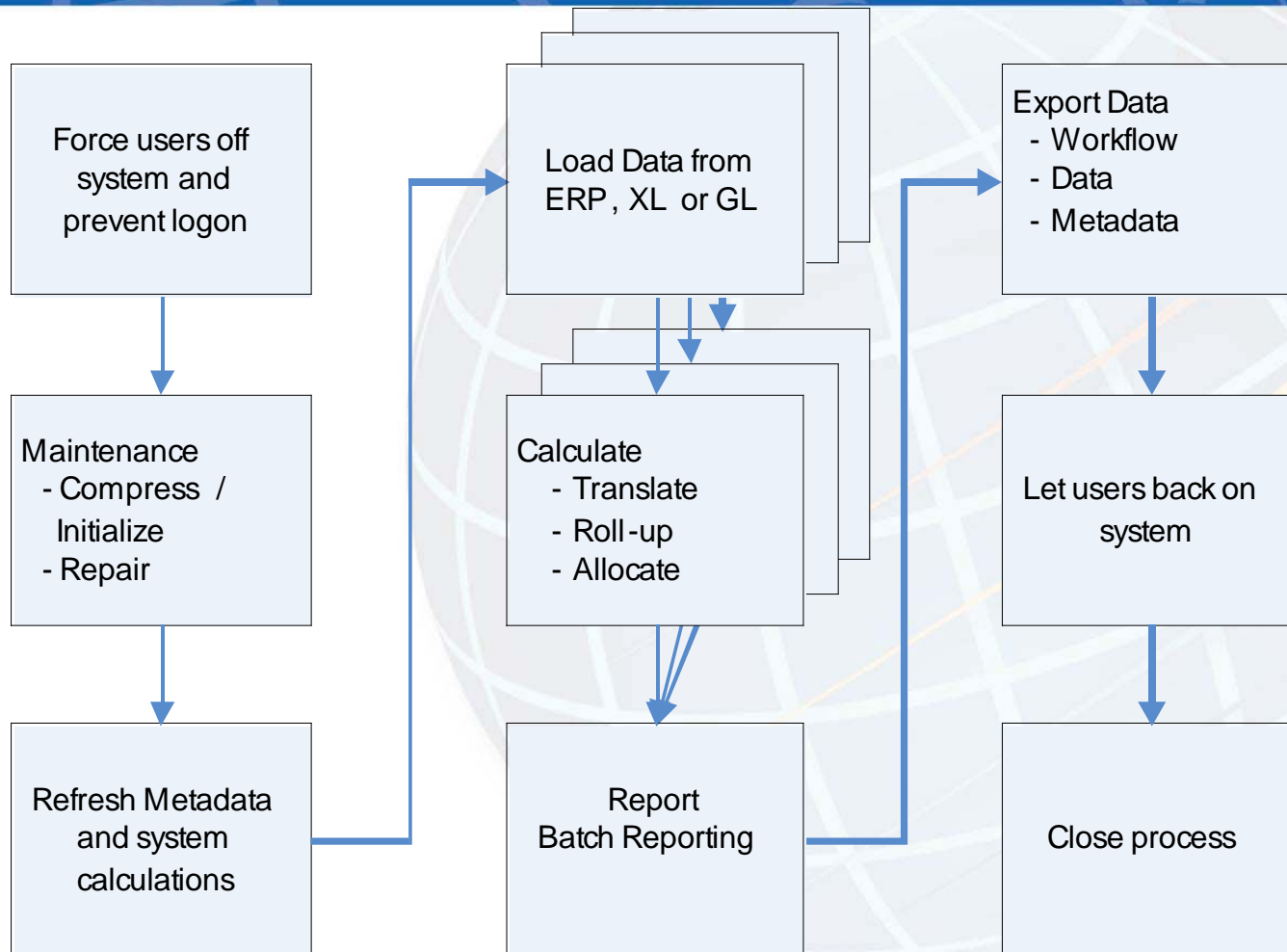
*Harness the Power of Change*

# Automation Example - Closing

- Steps
  - Force users off system
  - Maintain Systems
  - Refresh metadata
  - Import data
  - Calculate submissions
  - Move data
  - Export Data
  - Generate Reports
  - Reset Security

*Harness the Power of Change*

# Typical Automation Flow Monthly Closing Process



*Harness the Power of Change*

# Command line development tools

- CF Update Wizard – use to prepare common batch scripts. Scripts can be saved as either .bat or .js (java script) file
- /Debug
- /NI
- Dos Commands
  - Pause
  - Echo on/off
  - REM
  - Call
  - Etc.

*Harness the Power of Change*

# Return Codes

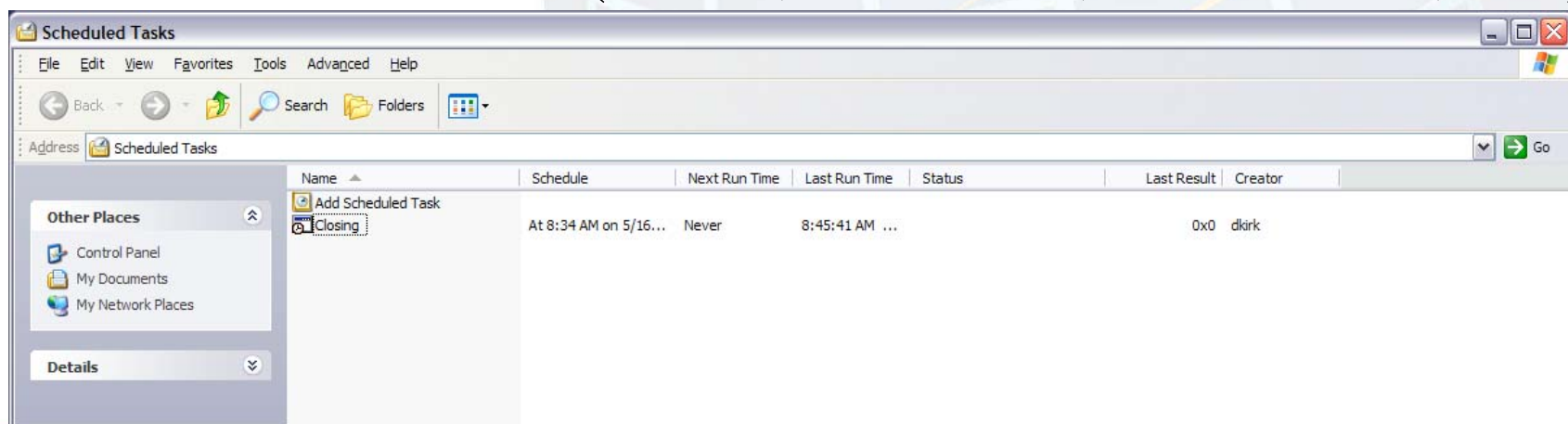
- 0 = all OK
- 1- 32767 = Warnings
- 32768 + = Errors



# Scheduling Automation

Schedulers can be used to automate processes:

- Microsoft Scheduler
- Cognos Scheduler
- Cognos Data Manager
- Other schedulers (Tivoli, Redwood, Informatica, etc.)



*Harness the Power of Change*

# Schedule vs. Event

- CF Command Lines can be controlled based on time or events
  - Time scheduling – processes are initiated based on a set time – e.g., GL finishes at 2:00 am, CF process starts at 3:00 am.
  - Event scheduling – an event initiates the process – such as a completion code or a flag file – e.g., GL creates a file when complete, CF process starts when file appears.

# More Information

- **Chapter 29: Using the Command Line to Control – [Cognos Finance User Guide](#)**
- **Chapter 3: Improved Application Administration – New Command Line Parameters – [Cognos Finance New Features Guide](#)**

# New command lines

**/ACTION LOCK and UNLOCK – lock or unlock Dimensions or Libraries**

**/ACTION CURRENTMONTH – change current month via a command line**

**/ACTION SETPTRSUB – Change Pointer Submissions**

**/EXISTINGFILE – Can decide whether to Append or Replace a file during Extract or GL Processing**

**/MONTH – Determine month to use in Batch Reporting or Define Items**

**/PTRSUB – Specifies the Pointer Submissions selected**

**/VALIDONLY – Allow selection of only Valid Targets for Transfer Data**

**/ZEROFILE – Creates a Zero Reconciliation File in Define Items for Childless Parents**

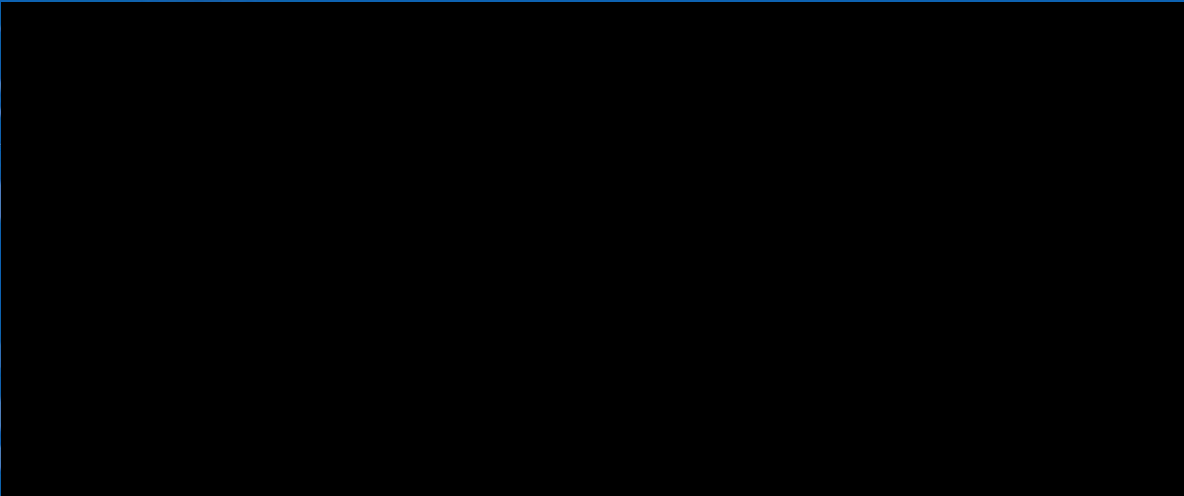
*Harness the Power of Change*

# Automate the close



... at 3:00 am, let the computer hit the close button and go back to bed.

*Harness the Power of Change*



Thank you.  
Any questions?



*Harness the Power of Change*